

KT-V12双霍尔助力传感器 KT-V12 Dual Hall Power-assist Sensor

功能与特点:

- 采用双霍尔检测元件与内置式磁盘一体化结构设计，具有独特新颖、外形美观。
- 与传统分离式传感器相比，实现磁盘与磁性感应元件的同轴心运动，传感灵敏度高，信号稳定。
- 12信号输出，助力响应速度快，能自动鉴别脚蹬时的正转与反转。
- 安装和拆卸方便快捷。传感器分左侧安装和右侧安装二种型号，左式型号KT-V12L, 右式型号KT-V12R。

外壳颜色和材料：黑色 PC材料

引线方式：三线制

标配接口：SM-3A

左式安装位置示意：

KT-V12L型双霍尔助力传感器采用左侧安装方式，安装时，只需卸下左侧曲柄，将传感器按图示的方向安装于电动自行车中轴，再将曲柄装回原处，完成传感器的安装。

KT-V12



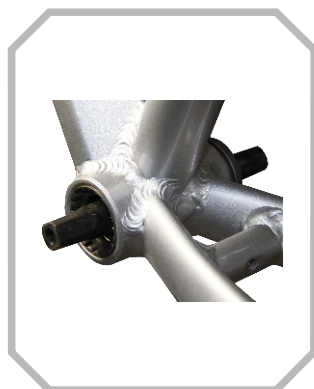
侧视图



左侧位置



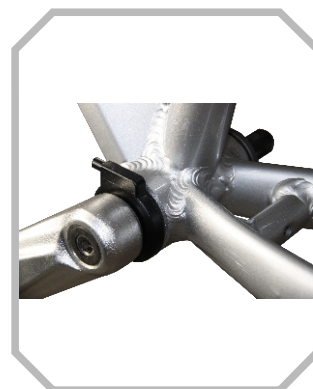
卸下曲柄



安装传感器



装上曲柄



KT-V12 Dual Hall Power-assist Sensor

Functions and features:

- Use the integration structure design of dual hall detection elements and the built-in disk, and it is unique, novel with beautiful appearance;
- Compared with the traditional separation sensor, it can realize the concentric motion of disk and magnetic induction element, which is with high sensitivity and stable signal;
- Output 12 signals with fast power-assist response speed, and it can automatically identify the positive rotation and the reverse rotation of the pedal;
- The installation and disassembly are convenient and quick. There are two kinds of sensors for left side and right side installation, the left KT-V12L and right KT-V12R.

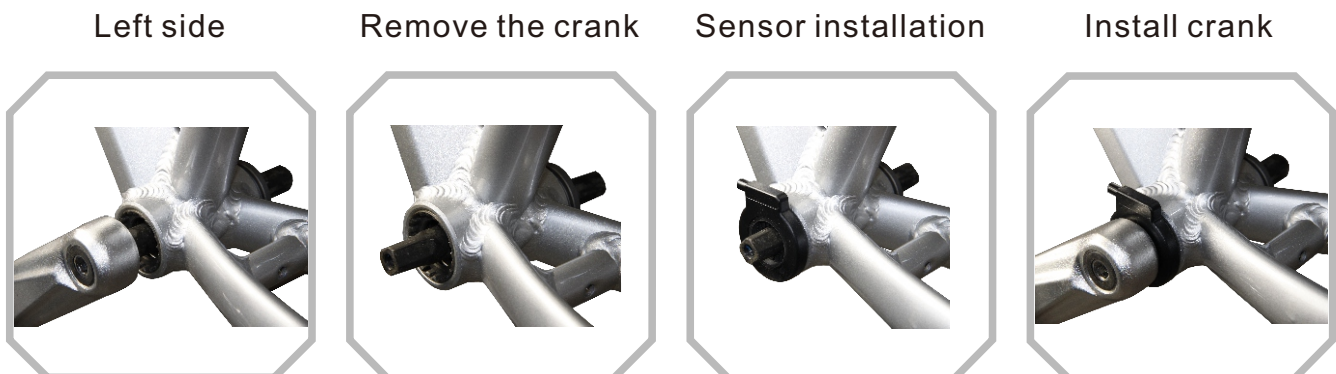
Shell color and materials: black PC

Lead way: three-wire system

Standard interface: SM-3A

Diagram of left-mounted position:

KT-V12L Dual Hall assist sensor uses the left installation mode, during the installation, it's simply needed to remove the left crank, and install the sensor in an electric bicycle axis according to the diagram, then install the crank back into place to complete the sensor installation.



KT-V12



Side view

