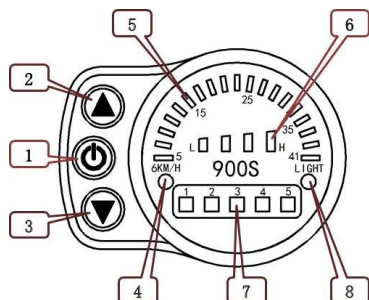


Dear users, please read this guide carefully before you use KT-LED900S instrument. The manual will guide you use the instrument correctly to achieve a variety of vehicle control and vehicle status displays.

Functions and Display



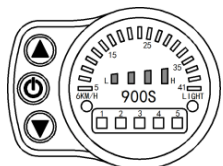
1		ON/OFF button	5	Speed Indicator Dial	19 LED Indicator
2		UP button	6	Battery capacity indicator	4 LED Indicator
3		DOWN button	7	Power ratio gear	Gear 5 LED Indicator
4		6KM/H boost function	8	LED indicator	Startup headlight

Operation

1. ON/OFF

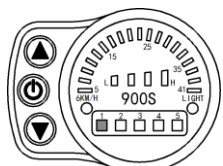
Hold button long to startup; hold button long for a second time to turn off the meter. When the motor stops driving and when the meter is not used for a consecutive 5 minutes, it will automatically shut down and turn off the motor power supply.

2. Boot Display Interface



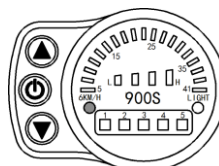
Hold button long to startup and enter boot display interface.

2.1 Assist ratio gear switch



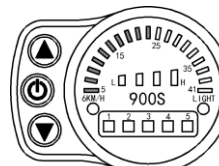
Hold or shortly to switch 1-5 file gear. Gear 1 is for the minimum power, gear 5 is for the highest power. Each startup will automatically restore the gear shutdown last time. Gear 0 (the indicators of five gears are off) is without power assist function.

2.2 6KM/H boost function



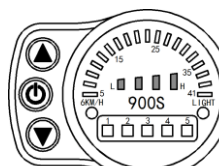
Hold button and LED indicator flashes, the vehicle drives at the speed should be no more than 6Km/h. Release button, the function is invalid.

2.3 Speed Display



19 LED speed indicator dial shows real-time display of current vehicle speed.

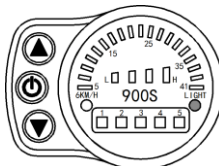
2.4 Power Display



When battery power capacity is greater than 80%, all 4 LED indicator are lit. When the battery capacities drop, the indicators are off in order. When the power capacity is less than 20%, the last indicator is flashing (L side). When the controller is under-voltage protection, all 4 LED indicators are power off, which means that the vehicle is currently shutdown due to

low voltage.

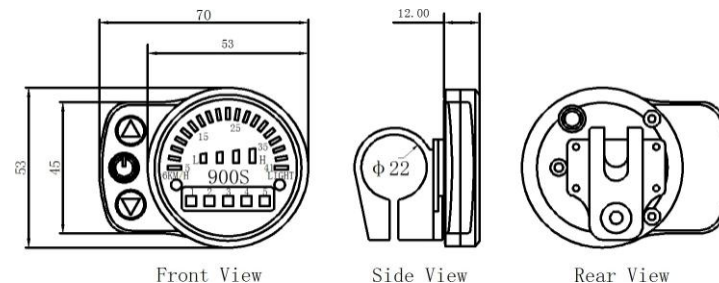
2.5 Startup headlights



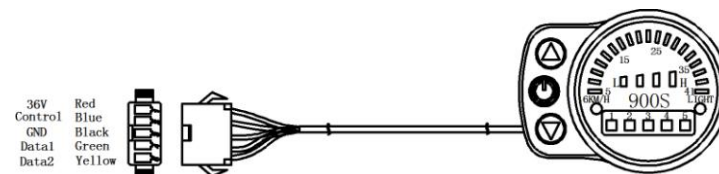
Hold button long to startup the lights (the controller should have the function of headlight driving output or built-in meter headlight driving output function), LIGHT indicator lights. Hold button again to turn off vehicle headlights, and the LIGHT indicator is turned off.

Outlook and Size

1. Display dimension



2. Wiring schematic



36V Red
Control Blue
GND Black
Data1 Green
Data2 Yellow