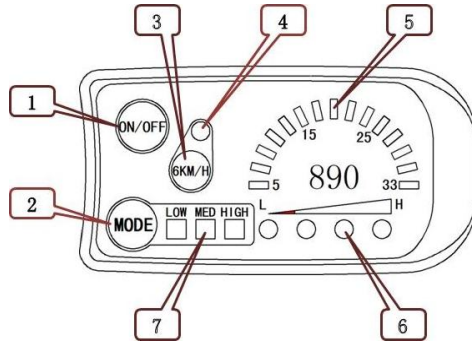


Dear users, please read this guide carefully before you use KT-LED890 instrument. The manual will guide you use the instrument correctly to achieve a variety of vehicle control and vehicle status displays.

Functions and Display



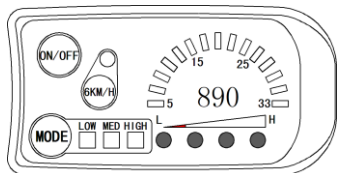
1	Operation button	ON/OFF button	5	Speed indicator dial	15 LED indicator
2		MODE button	6	Battery capacity indicator	4 LED indicator
3		6KM/H button	7	Power ratio gear	Gear 3 LED indicator
4	LED indicator	6KM/H boost function			

Operation

1. ON/OFF

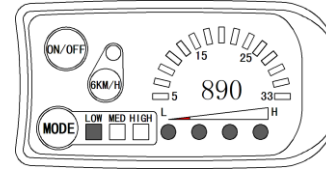
Hold **ON/OFF** button long to startup; hold **ON/OFF** button long for a second time to turn off the meter. When the motor stops driving and when the meter is not used for a consecutive 5 minutes, it will automatically shut down and turn off the motor power supply.

2. Boot display interface



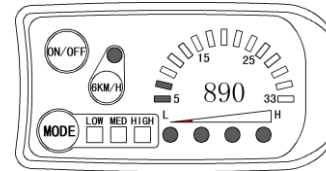
Hold **ON/OFF** button long to startup and enter boot display interface.

2.1 Assist ratio gear switch



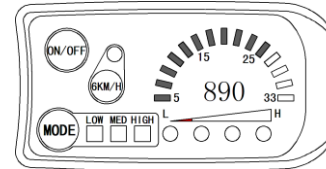
Hold **MODE** button shortly to switch 1-3 file gear, LOW is for the minimum power gear, MED is for the middle power gear, and HIGH is for the highest power gear. Each startup will automatically restore the gear shutdown last time. Gear 0 (the indicators of three gears are off) is without power assist function.

2.2 6KM/H boost function



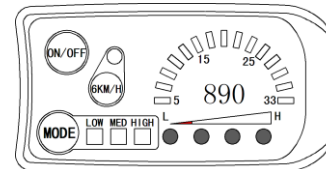
Hold **6KM/H** button and LED indicator flashes, the vehicle drives at the speed should be no more than 6Km/h. Release **6KM/H** button, the function is invalid.

2.3 Speed Display



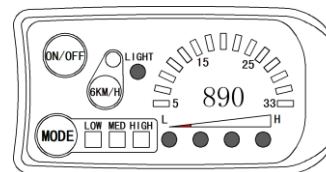
15 LED speed indicator dial shows real-time display of current vehicle speed.

2.4 Power Display



When battery power capacity is greater than 80%, all 4 LED indicator are lit. When the battery capacities drop, the indicators are off in order. When the power capacity is less than 20%, the last indicator is flashing (L side). When the controller is under-voltage protection, all 4 LED indicators are power off, which means that the vehicle is currently shutdown due to low voltage.

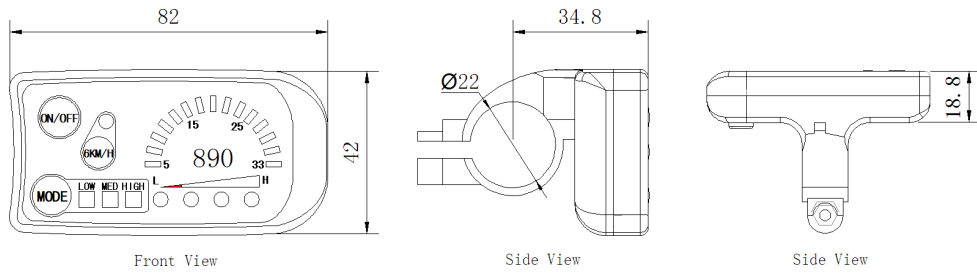
2.5 Startup headlights (Optional)



Hold **MODE** button long to startup the lights (the controller should have the function of headlight driving output or built-in meter headlight driving output function), LIGHT indicator lights. Hold **MODE** button again to turn off vehicle headlights, and the LIGHT indicator is turned off.

Outlook and Size

1. Meter dimension



2. Wiring schematic

